



## Standards



TYPE 5  
13982-1



TYPE 6  
13034

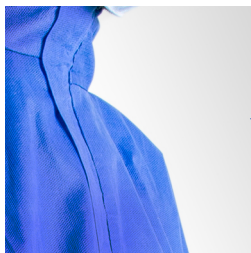


EN  
1149-5



EN  
1073-2

## Technical specifications



Self-adhesive zip flap for increased protection



Hood 3 pans allows much greater freedom of movement



Bat-wing sleeve allows much greater freedom of movement



Jersey wrists

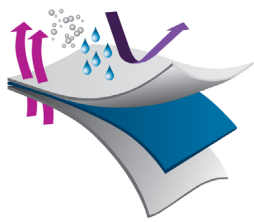


- Two-way zipper
- Cuffs, ankles and waist elasticates for a better fit
- Breathable fabrics and ergonomic style pattern help to reduce the risk of heat stress
- 1073-2 Standards Against radioactive particles
- Blue color for dirty works and obscures the excessive dirt
- Taped seam flat for optimal sealing to asbestos fibers

# Material and seams

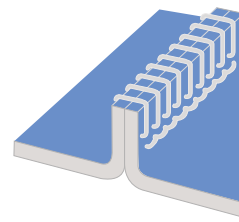
## SMS MATERIAL

Provide high breathability and optimum comfort



## SERGED SEAM

Offer an excellent strong seam. Appropriate for dry particulates and liquid light spray



**4 THREADS**

# Area of applications

- Wood and building sanding
- Composite industry
- Industrial cleaning and maintenance
- Sanding work, Insulation work, general manufacturing and maintenance work
- Dirty environment, hygiene et factory visit
- Paintball

## Tests Results EN ISO 13935-2 Seam strength

Test method	Results	Class
Seam strength	100N	3/6

## Tests Results EN ISO 13982-1 Dust testing on the integral coverall

Test method	Results
+A1 :2010 Type 5	
Mean value of all total inward leakage measurements L	3,98%
Total inward leakage value per Ls8 / 10 protection combination	4,3%
Value of the leak inwards Ljmn 82/90	7,9%

# Reference

L	XL	XXL
WL-CB-03	WL-CB-04	WL-CB-05

**WL-CB-0X**

